

CENTER ARM BUSHING PULLER

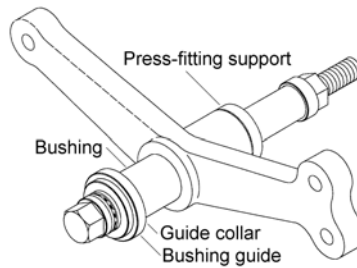
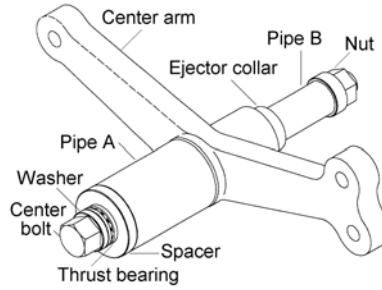
LF-928

This is a special tool for replacing metal bushings, used for the center arms of mini-sized light vans manufactured by Daihatsu, Suzuki, Subaru and Honda. Screw pressure is used instead of a press for easier work!

When removing bushings



When inserting bushings



LF-928 Applicable models

Model	Type	Year model	Ejector collar	Bushing guide	Guide collar	Bushing genuine part no.
Dai hatsu Hi-zet	S80,S81	86.05-	A	A	A-1	45425-87506
	S65 (12-inch vehicles)	81.04-86.04	A	A	A-1	45425-87506
	S65 (10-inch vehicles)	81.04-86.04	B	B	B-1	45425-87501
	S66	81.04-86.04	B	B	B-1	45425-87501
Suzuki Carry	S60	77.03-81.03	B	B	B-1	45425-87501
	S40	76.04-81.03	B	B	B-1	45425-87501
	DB71T	85.03-	A	A	A-1	48750-85000
	DA81T	86.03-86.12	A	A	A-1	48750-85000
	ST40	80.10-	C	B	A-1	48750-79030
Honda Acty	ST20	76.09-79.04	C	B	A-1	48750-79030
	TA200-TA240	82.07-88.06	B	B	B-1	53461-679-000
	VD200-VD240	82.07-88.06	B	B	B-1	53461-679-020
	TA1,VD1	77.07-82.06	B	B	B-1	53461-679-000
Subaru Sambar Try	HA1-4,HH1-4	88.05-	B	B	B-1	53461-SJ6-010
	KT1A,2A,KT2H	82.09-84.09	B	B	B-1	6310-03060
	KR1A,2A,KR1H,2H	82.09-84.09	B	B	B-1	6310-03060
	KT1A,2A,KT2H	84.09-	A	A	A-1	7310-46031
	KR1A,2A,KR1H,2H	84.09-	A	A	A-1	7310-46031
	KT1C,2C,KT1K,2K	84.10-87.08	A	A	A-1	7310-46031
	KR1C,2C,KR1K,2K	84.10-87.08	A	A	A-1	7310-46031
	KR2,KR2L	84.10-87.08	A	A	A-1	7310-46031
	KT1E,1M (except 5F 4WD)	87.09-	A	A	A-1	7310-46031
	KR1F,1M (except 5F 4WD)	87.09-	A	A	A-1	7310-46031
KT6E,6M(5F 4WD)	87.09-	B	B	B-1	6310-03060	
KR6E,6M(5F 4WD)	87.09-	B	B	B-1	6310-03060	

*1 For vehicles not included in this table, a separate collar or a guide may be required. Please consult HASCO for detailed information.

*2 This tool cannot be used for the Suzuki Carry ST41 (4WD).